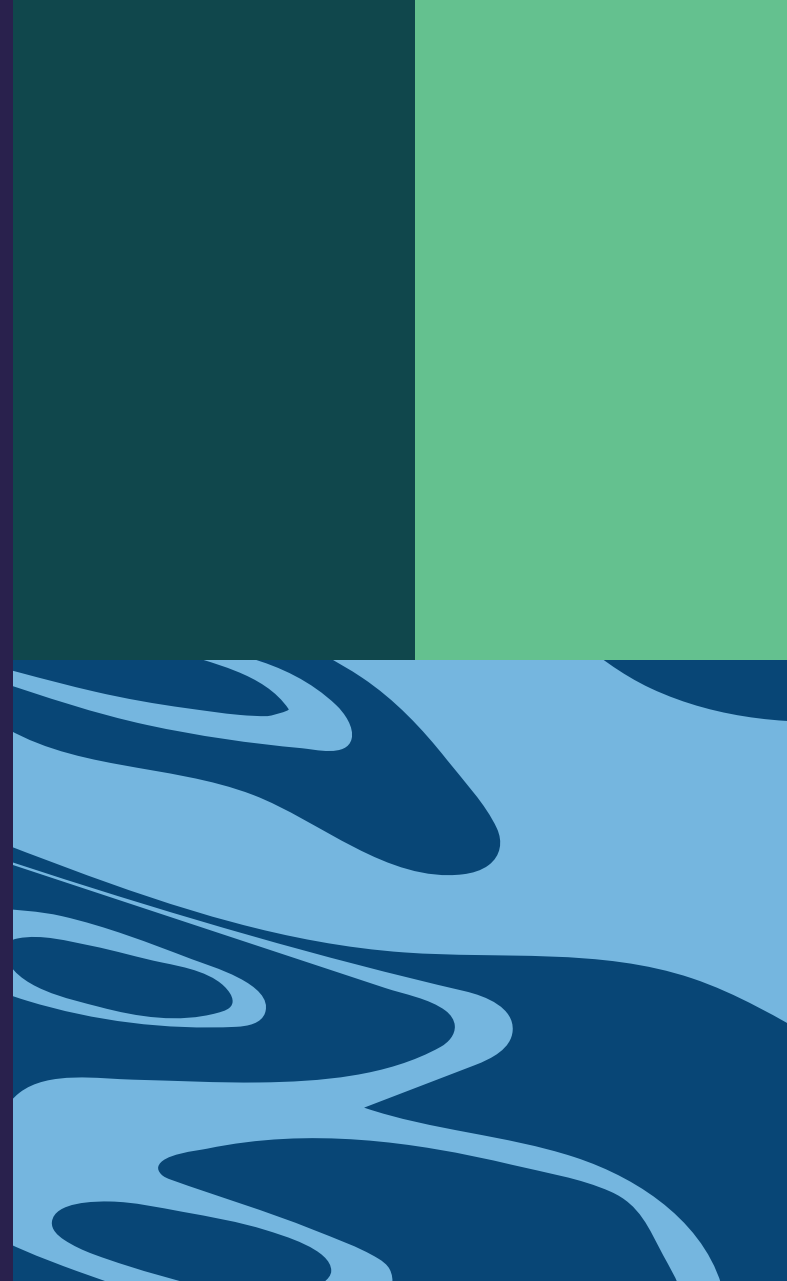


Events at St. Katharine Docks Marina

Our Spaces



ST. KATHARINE DOCKS
LONDON



an  IGY destination®

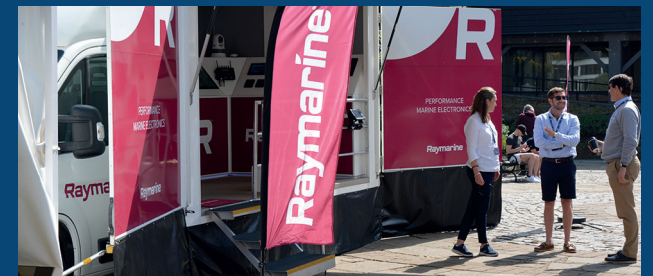
Welcome

St. Katharine Docks Marina

St. Katharine Docks is Central London's only Marina and offers charm 200 years in the making. It provides you with a unique and dynamic backdrop for your event, at water level or ashore.

Whether you're looking to host a small intimate event for just ten people, or run an event for hundreds, we would love to hear from you.

St Katharine Docks has various spaces available for a range of events, if you're looking for an iconic London landmark please contact us via email, marina.reception@skdocks.co.uk to discuss your requirements further or to arrange a site visit.



ST. KATHARINE DOCKS
LONDON



an IGY destination

London on the water

Tailored berthing for your event

Event packages are available, combining premium berthing with a dedicated event space to deliver a seamless and memorable launch experience. Our marina team is on hand to support every aspect of berthing and vessel logistics, ensuring optimal positioning and maximum exposure within the stunning London dock setting.



Marina Events

Previous Partners

St Katharine Docks Marina has had the privilege of working with and hosting events for a number of marine companies over the years. The list includes the yacht builders, Sanlorenzo, Oyster Yachts and Sunseeker. In the past, the marina has also worked closely with the marine trade association, British Marine in hosting boat show events such as 'London Luxury Aloat'.



Coronarium

Historic function space

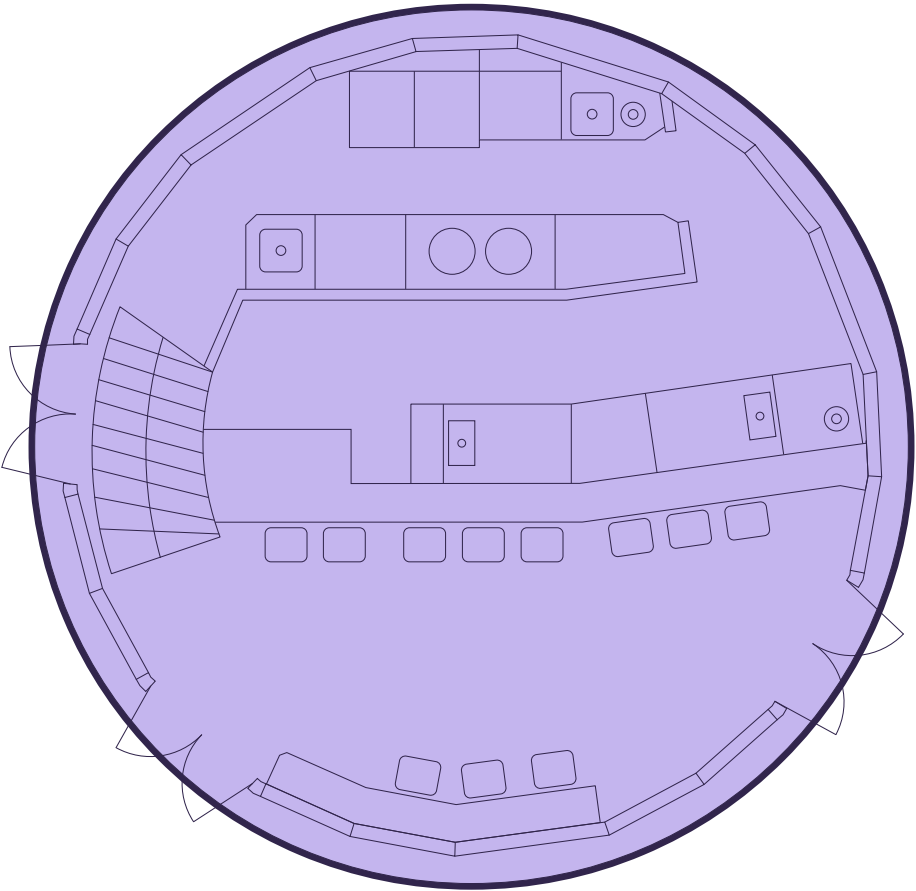
A striking two-level, multi-functional space. Ideal for entertaining, the copper-domed former chapel provides a social lower bar area with a contained fully fitted kitchen and food preparation area, while an upper mezzanine level provides 360 degree views across the marina and historic dock basins.



Coronarium

Historic function space

Ground floor — 420 sq ft



Floor	sq ft	sq m
Ground floor	420	39
First floor	342	32
Total	762	71

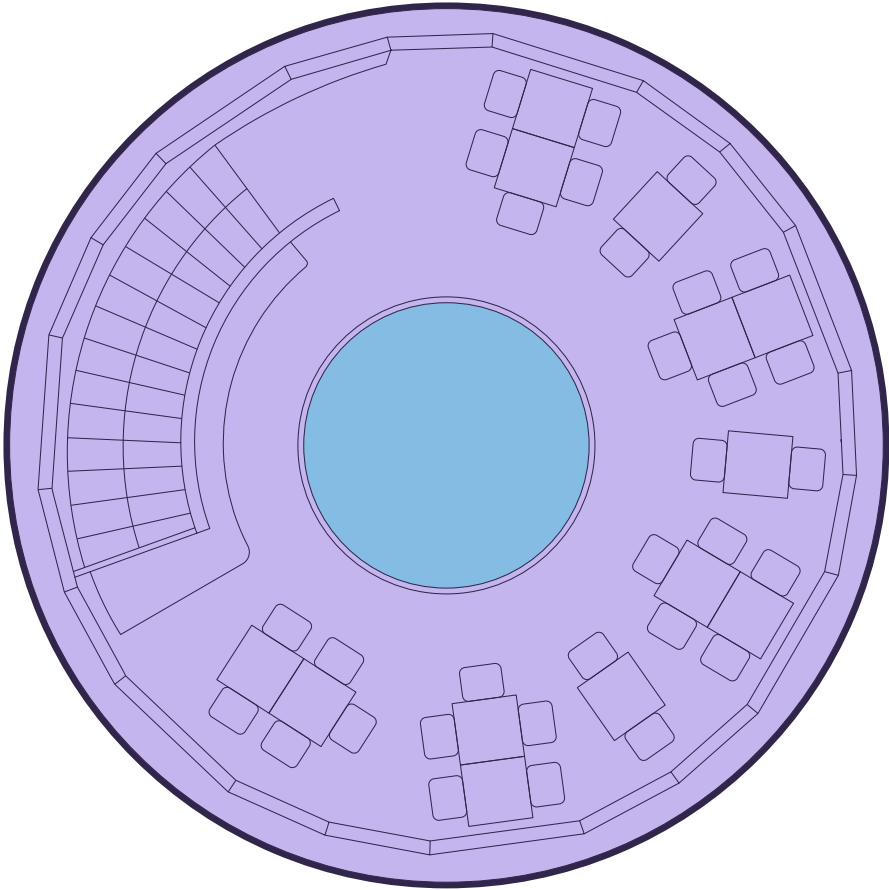
Figures showing lettable areas.



Coronarium

Historic function space

First floor — 342 sq ft



- Available unit
- Atrium

Floor	sq ft	sq m
Ground floor	420	39
First floor	342	32
Total	762	71

Figures showing lettable areas.



The Clubhouse

A meeting place on water

Our Floating Hub is a multi-functional space. Featuring two rooms, the Hub can be hired out for larger meetings, dinners or receptions, whereas the smaller room works perfectly as an office away from the office! One of the highlights of the Hub is it's wrap-around terrace and rooftop garden, ideal for enjoying some fresh air in the summer months. The Hub comes complete with the furnishings detailed below.



The Clubhouse

A meeting place on water

Capacities

Total	Dinner	Boardroom	Reception
10	10	10	10

Dimensions

M ² (approx.)	Access
75	Pontoon

Furniture

Lounge space, TV, fully equipped kitchen area	Dining table with 4 chairs, TV and office equipment
---	---

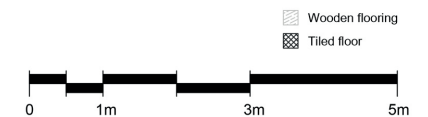
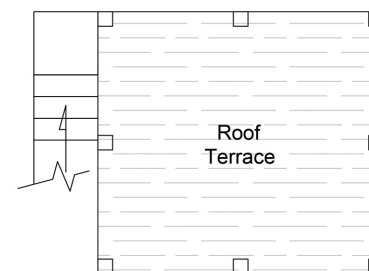
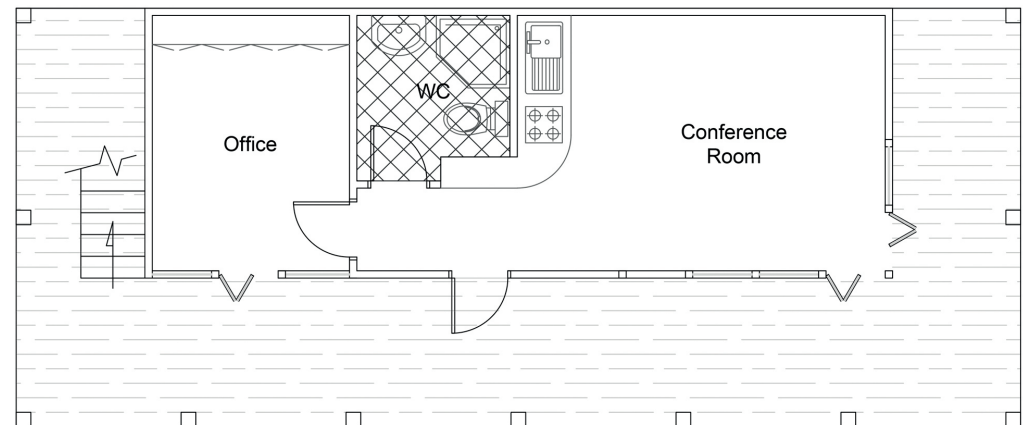
Facilities

Power	Water
Y	Y

Bathroom Access

Own Toilet and Shower

**DWG Files are available on request*



ST. KATHARINE DOCKS
LONDON



an IGY destination*

The Pontoon

Your very own island

Our popular Floating Event Pontoon is a truly unique event space. Located on the water, the views over the marina and boats are extremely impressive. The pontoon comes complete with a white stretch tent and festoon lighting, so you don't even need to worry about the British weather. Although normally located in the Centre Basin, the pontoon can be moved to suit your requirements.

The pontoon comes unfurnished or add our furniture packages to suit your event.

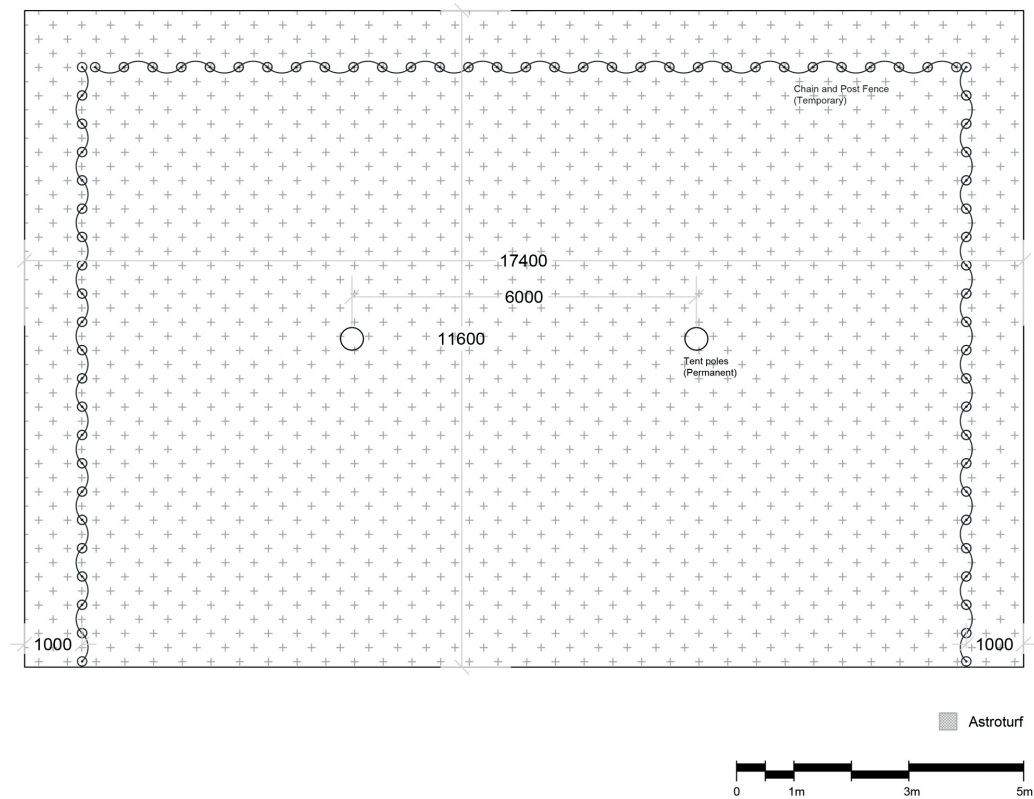


The Pontoon

Your very own island

Capacities			
Total 90	Dinner 90	Boardroom 90	Reception 100
Dimensions			
M ² (approx.) 200		Access Pontoon	
Furniture			
Range of benches tables, sofas, bar, and bistro tables and chairs			
Facilities			
Power Y		Water On Request	
Bathroom Access			
Public Toilets, Cloisters Marina Bathroom Access			

**DWG Files are available on request*



Marble Quay

Open space at the heart of the Docks

Our largest event space on-site is Marble Quay, positioned in the heart of St. Katharine Docks and directly in-front of the famous The Dickens Inn pub. The cobbled, outdoor space lends itself to many event opportunities and will ensure maximum exposure for you and your brand. The space benefits from lovely views of the Centre Basin in the Marina and across most of the Estate. Due to the proximity of residential flats in the area, noise and time restrictions are in place.

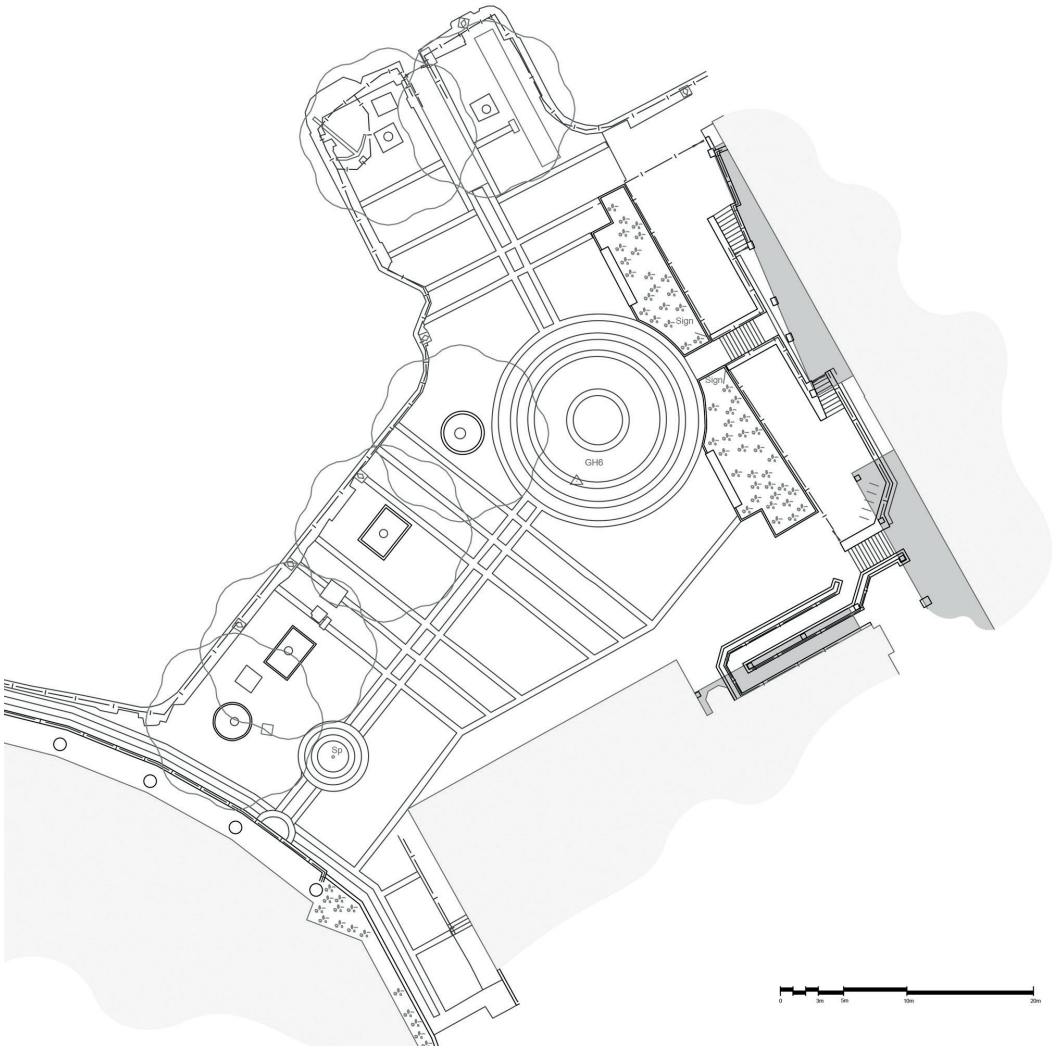


Marble Quay

Open space at the heart of the Docks

Capacities			
Total TBD	Dinner TBD	Boardroom TBD	Reception TBD
Dimensions			
M ² (approx.) 1800		Access Street	
Furniture			
Range of benches tables, and bistro tables and chairs			
Facilities			
Power Y		Water N	
Bathroom Access			
Public Toilets, Ivory House			

**DWG Files are available on request*



Contacts

Claire Frew

cfrew@skdocks.co.uk

Tom Lord

tlord@skdocks.co.uk

Marina Enquiries

marina.reception@skdocks.co.uk

Events

events@skdocks.co.uk

skdocks.co.uk

ST. KATHARINE DOCKS

LONDON



an  IGY destination®